

# WEATHER 2015

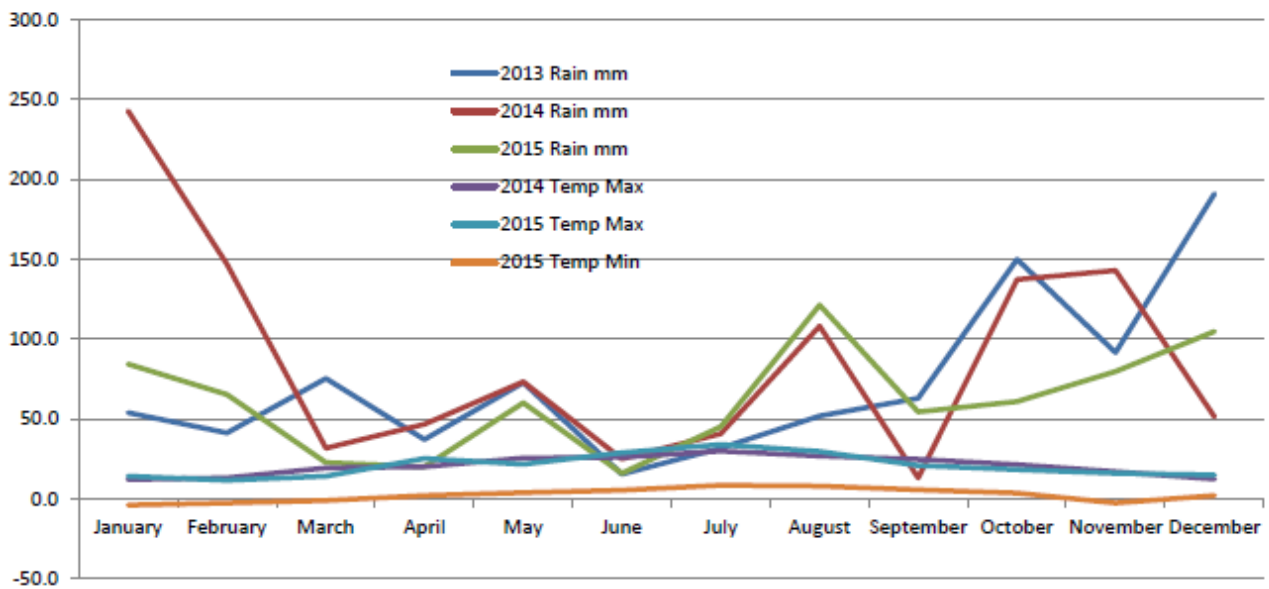
For much of the UK winter 2015 will be regarded as relatively benign and quiet, especially when compared to the exceptionally stormy weather of the previous winter. Nevertheless the north of the UK bore the brunt of some significant storms in mid-January and late February. Otherwise this was a fairly typical winter. The weather was mostly dominated by an Atlantic flow bringing a succession of low pressure systems and associated fronts, but there were spells of high pressure in the first half of February. Snowfalls caused some disruption in our area in late January and early February, otherwise it was a normal winter, with a couple of unusually warm days on the 9<sup>th</sup> and 10<sup>th</sup> January. This dry weather continued through March and April with a warm spell in the middle of April (maximum temperature 25° C), but we still had a couple of light frosts right at the end of the month. May was average except for a few quite wet days but then a dry week from 21<sup>st</sup> to 28<sup>th</sup>. June was exceptionally dry and quite mild but with no really warm days until the last few. The first week of July was warm with only a little rain, but generally the maximum daily temperature was disappointing especially towards the end of the month, but the mean average monthly temperature was acceptable at 16.9° C. August was a wet month with 121 mm of rain, and only a few consecutive warm days. The last 8 days were especially wet with 77 mm of rain, and quite low pressure dominating in this period. However the average temperatures were surprisingly higher than in 2014. September, with its noticeably shorter days was relatively mild with no really warm days and noticeably cooler than in 2014. Rain was average with dry periods in the second and last weeks of the month. October was again an average month for temperature but with much lower rainfall than in 2013 or 2014, there were no frosts. November and December were very mild and wet months, especially December with nearly 105 mm rain. Only three frosts in November the first on 22<sup>nd</sup> but no frosts at all in December.

You can see on the attached graph that the average monthly temperatures in 2015 were very similar to 2014 with the highest annual temperature of 33.9 on 1<sup>st</sup> July. We had a total of 29 frosts in 2015. I recorded a total of 193 days when there was 0.2mm or more rain, but only one with more than 20 mm on 21<sup>st</sup> August.

It would be good to remember that the press in September were forecasting a repeat of the devastating snowy winters of 1962/3, but of course we will have to wait to see what happens during the first three months of 2016. A stronger than usual El Nino has had an effect especially with the severe and devastating flooding in the Northwest and Northeast of the both England and Scotland, a reminder to us of how much nature can affect all our lives. The three storms of Desmond on 4/5 December, Eva on 22<sup>nd</sup> December, and Frank on 28<sup>th</sup> December caused havoc and intensive flooding and our hearts go out to all those who have had to flee their homes. There are some predictions that 2016 will be hotter than 2015, but these like all forecasts are subject to change!

## RAINFALL - WINTER MONTHS

	2003	2004	2005	2006	2007	2008	2009	2010	2011	2012	2013	2014	2015	2016	2017
January	89.92	159.8	34.5	23	75	72.4	87.9	53.2	73.80	37.6	53.8	242.8	84.4		
February	29.21	36.7	26.5	54.7	105.7	24.9	70	83.7	49.00	16.2	41.2	146.8	65.2		
March	21.59	37.8	57.5	56	66	85.2	36.1	58.2	13.60	22.8	75.2	31.6	22.6		
September	10.16	28.4	37.5	104.7	29.9	64.4	29.8	69.4	39.80	69.8	62.8	13.2	54.4		
October	45.72	118.1	98.6	102	54.7	98.3	36.4	78.6	29.00	108.8	150	137.2	60.8		
November	111.76	74.9	51.5	63	104.5	95.5	194.6	54.3	50.20	96.6	91.7	143	79.8		
December	45.97	66.1	50	49.7	102.1	54.7	111.4	45.6	88.00	120	190.9	51.3	104.8		
<b>TOTAL mm</b>	<b>354.33</b>	<b>521.8</b>	<b>356.1</b>	<b>453.1</b>	<b>537.9</b>	<b>495.4</b>	<b>566.2</b>	<b>443</b>	<b>343.40</b>	<b>471.8</b>	<b>665.6</b>	<b>765.9</b>	<b>472</b>		
<b>Total Rain</b>	<b>535.94</b>	<b>850.4</b>	<b>559</b>	<b>722.8</b>	<b>811.2</b>	<b>841.9</b>	<b>795.8</b>	<b>614.7</b>	<b>588.8</b>	<b>975.4</b>	<b>874.5</b>	<b>1059.4</b>	<b>734.4</b>		



## 2015 Rainfall, temperature & Frosts

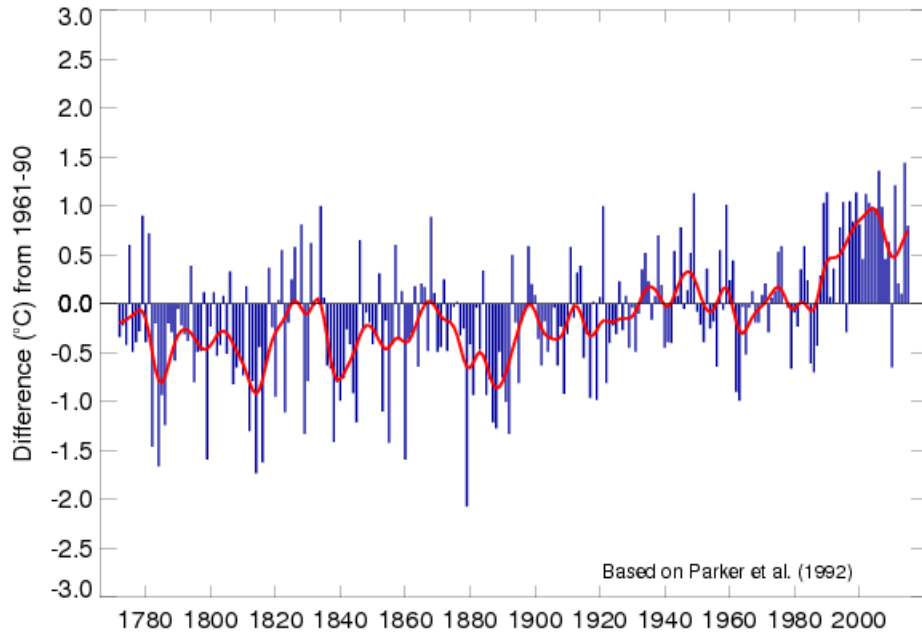
Month	Week 1	Week 2	Week 3	Week 4	Week 5	Total mm	Max Temp	Min Temp	Min Press	Frosty Days
<b>RAIN in mm</b>										
January	12.4	19.4	36.6	8.2	7.8	84.4	14.2	-3.9	970.0	9
February	1.4	13.6	7.0	29.0	14.2	65.2	11.4	-2.7	986.0	10
March	6.4	3.2	0.4	11.0	1.6	22.6	14.2	-1.0	995.0	5
April	5.0	1.4	0.0	6.4	7.2	20.0	25.2	1.9	998.0	2
May	5.4	14.6	13.6	15.4	11.2	60.2	21.7	3.7	982.0	
June	6.8	0.2	0.6	8.2	0.0	15.8	28.8	5.4	996.0	
July	1.6	1.2	4.4	37.2	0.8	45.2	33.9	8.4	992.0	
August	2.4	26.8	14.8	66.6	10.6	121.2	29.5	7.8	991.0	
September	3.4	1.4	28.8	20.8	0.0	54.4	20.9	5.7	982.0	
October	0.4	21.6	2.8	15.8	20.2	60.8	18.2	3.4	990.0	
November	0.6	25.8	14.0	20.0	14.4	79.8	16.0	-2.8	995.0	3
December	8.2	19.2	23.8	28.6	25.0	104.8	14.9	2.1	1005.0	
<b>Total</b>						<b>734.4</b>				<b>29</b>

## Comparison with previous 2 years

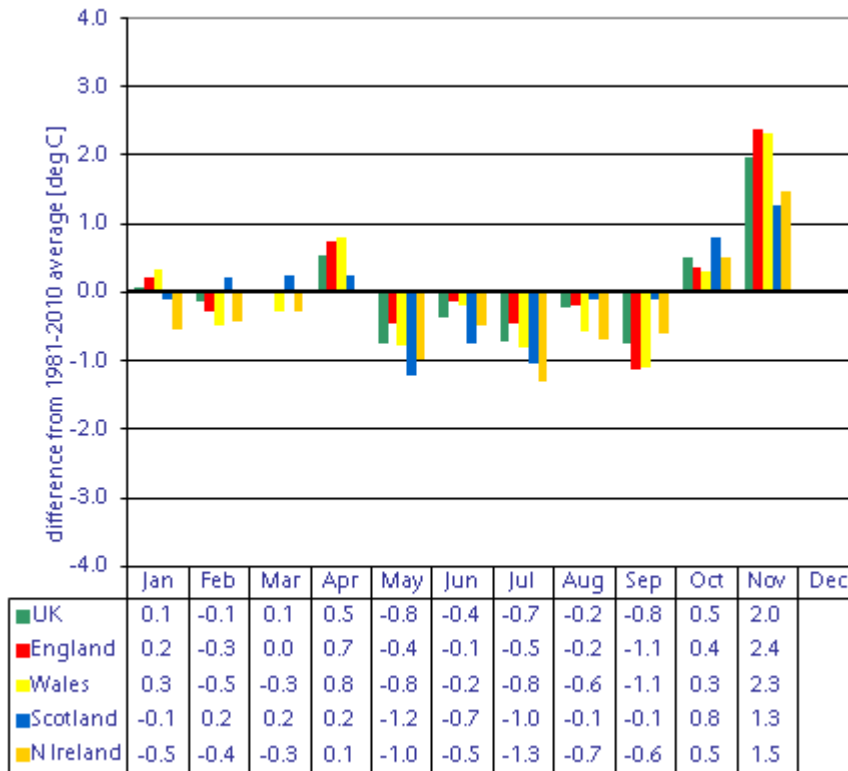
Month	2013 Rain mm	2014 Rain mm	2015 Rain mm	2014 Temp Max	2015 Temp Max	2015 Temp Min
January	53.8	242.8	84.4	12.0	14.2	-3.9
February	41.1	146.8	65.2	13.1	11.4	-2.7
March	75.4	31.6	22.6	19.2	14.2	-1.0
April	37.2	46.6	20.0	20.1	25.2	1.9
May	72.8	73.2	60.2	25.5	21.7	3.7
June	15.4	24.9	15.8	26.0	28.8	5.4
July	31.6	40.8	45.2	29.9	33.9	8.4
August	51.8	108	121.2	26.7	29.5	7.8
September	62.8	13.2	54.4	24.6	20.9	5.7
October	150.0	137.2	60.8	21.4	18.2	3.4
November	91.6	143	79.8	16.9	16.0	-2.8
December	190.9	51.3	104.8	12.2	14.9	2.1
	<b>874.4</b>	<b>1059.4</b>	<b>734.4</b>			



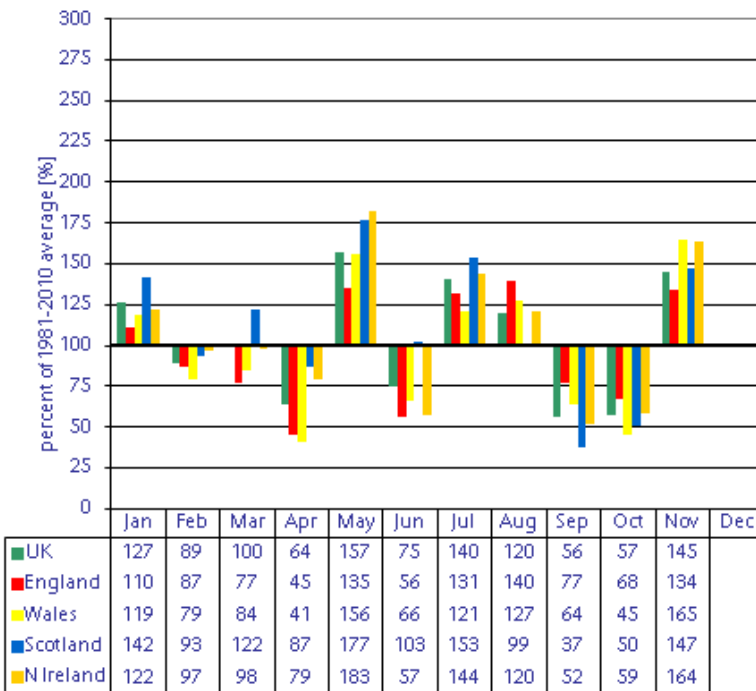
### Mean Central England Temperature Annual anomalies, 1772 to 2015



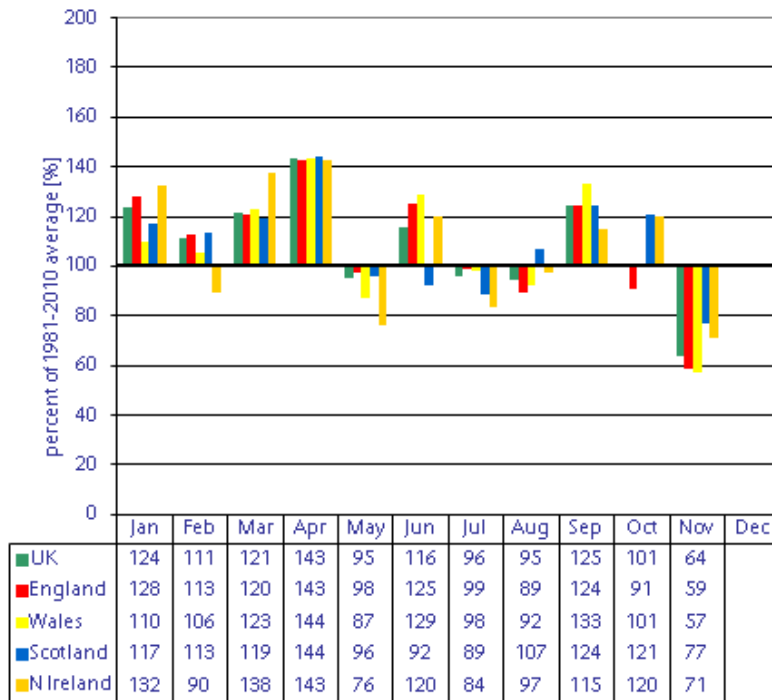
### Mean temperatures (1981-2010) anomalies for 2015



### Rainfall (1981-2010) anomalies for 2015



Sunshine (1981-2010) anomalies for 2015



This information taken from the Met Office website for data collected at their Hadley Central England site. No December figures available at this time. The anomalies are deviations from the norm over the period stated in the chart headings.

David Cullen 5<sup>th</sup> January 2016